



# inland

## DB-100™ Wet/Dry Band Saw

### User Guide

**NONE of the saws listed in this guide are suitable for use as a Frag Saw. Use with or in a salt water environment will ruin the machine and doing so in any manner will void the warranty! Aquarists and similar, please use the Inland DFS-100 ReefKeeper™ saw, Inland no. 91060.**

Thank you for buying this Inland product. Please take time to read all the instructions to understand the correct components, set up, and use of the model you purchased.

## Safety

- It is extremely important to wear proper eye protection when using any saw. We highly recommend that you wear safety goggles rather than safety glasses.
- DO NOT wear loose clothing or any accessories (long necklaces, bracelets, shirts with long fringes, and similar) that might get caught by the saw during operation.
- Use only in a properly grounded and tested outlet. Under NO circumstances should you override the grounding system or modify the plug.
- Set up your machine on a sturdy, level work surface that is water tolerant and a comfortable height to work on.

## Parts

The following are model specific parts for all models of DB-100 Bandsaws and depending on the model you purchased, the parts and the degree of assembly will vary. Check to make sure that you have all the parts listed for your particular machine before beginning assembly.

Part No.	Part Name	Qty.	Color	91010	91040	91030
90007	DiamondCut™ Blade	*	silver	2	no	1
90001	WoodCut™ Blade	*	silver	no	1	no
90033	Molded Work Table	1	black	yes	yes	yes
65829172	10-24 x 1/2" Phillips Screw	4	silver	yes	yes	yes
90022	BladeSert™	2	black	yes	yes	yes
78824055	5/64" Long Arm Allen Wrench	1	black	yes	yes	yes
65809114	Coolant Reservoir	1	gray	yes	yes	yes
65809118	Coolant Reservoir Cover	1	gray	yes	yes	yes
65829184	DB-100 Coolant Tubing	1	clear	yes	yes	yes
70821103	10-24 x 1/2" Metal Thumb Screw	1	silver	yes	yes	yes
90016	Blade Drip Guide	1	gray	yes	yes	yes
65829113	10-24 x 3/8" Brass Thumb Screw	2	gold	yes	yes	yes
65829119	DB-100 Drain Hose	1	clear	yes	yes	yes
90014	Leather Blade Wiper	1	brown	yes	yes	yes

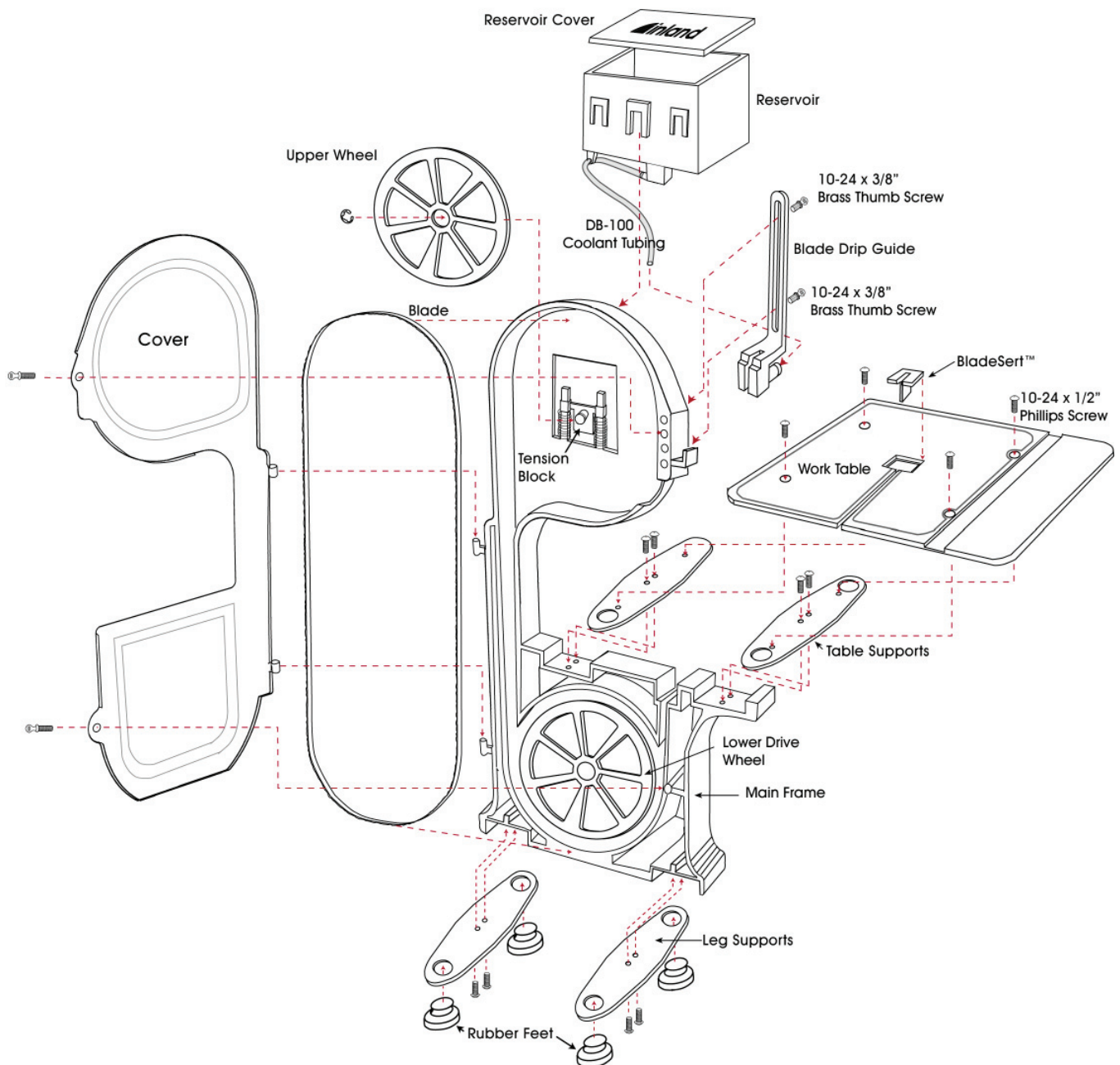
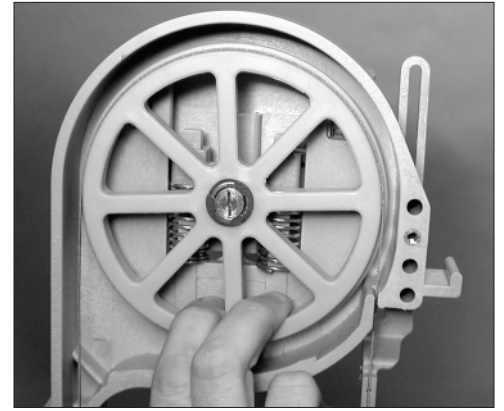
*\*Dependant upon model purchased*

## Assembly Instructions

Assembly will take about 5 minutes and only requires a Phillips screwdriver. Use the exploded drawing on the following page to reference parts and their placement during the assembly process.

## Installing the Blade

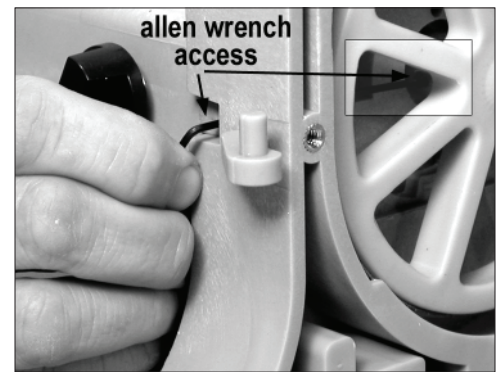
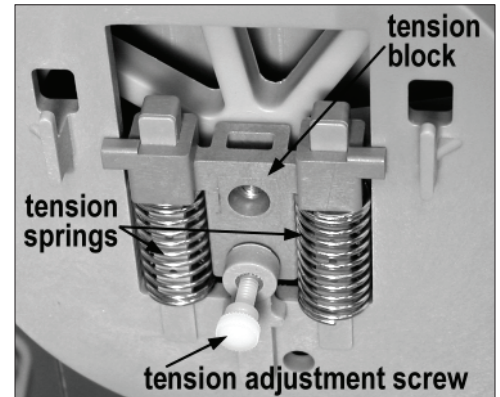
1. Open the front cover of the saw. If you have a toothed blade, make sure to mount it with the teeth pointing downward, in the direction of sawing. Diamond blades are positioned with the diamond surface facing the saw front.
2. Position the blade around the lower wheel and into the right and left guide channels. DO NOT bend or twist the blade at any time during installation or use.
3. Use one hand to grasp the bottom of the upper wheel between two spokes and pull the bottom of the wheel towards you (approximately 3/8", but you should feel it move easily initially and then "hit" and not want to go further without forcing), then, while the wheel is tilted towards you, pull the wheel down enough to place the blade around the wheel using your other hand.
4. Slowly release the wheel as you make sure the blade remains on both wheels and passes through the right and left channels.



- Tracking, the position of the blade on the wheels, is controlled by adjusting the tilt of the upper wheel. Check the tracking by rotating the lower drive wheel several revolutions by hand while watching the position of the blade on the wheels. The blade should remain centered on both wheels. If the blade isn't centered or comes off either wheel, you will need to adjust the tracking and alignment as outlined in the next sections. If the blade rides centered on the wheels skip to Installing the Work Table.

## Adjusting Blade Tracking and Alignment

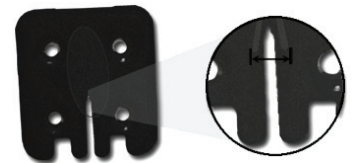
The wheels are factory aligned so that the position of the blade is controlled by adjusting the upper wheel tilt. On the back of the upper housing is the tension device with a nylon tilt adjustment screw in the middle. Be aware that any changes made to the blade position on the upper wheel will have the opposite effect on the blade's position on the lower wheel. Read through the possible problems below to find the one that best describes what is happening when you hand turned the wheel and follow the instructions for fixing it. Make all adjustments in small increments.



- If the blade “walks” off the front of the upper wheel:** Tilt the top of the upper wheel backward by turning the nylon tilt adjustment screw to the right (clockwise). Make 1/2 turn adjustments and test the effect on tracking by hand turning the lower wheel. Repeat as necessary until the blade remains in the correct position.
- If the blade “walks” to the back of the upper wheel:** Tilt the top of the upper wheel forward by turning the nylon tilt adjustment screw to the left (counter-clockwise). Make 1/2 turn adjustments and test the effect on tracking by hand turning the lower wheel. Repeat as necessary until the blade remains in the correct position.
- If the blade “walks” off the lower wheel:** This indicates that the upper and lower wheels are not in alignment with each other. The lower (fixed) wheel is closer to the back of the frame than the upper (adjustable) wheel. The lower wheel should be 1/2” from the inside of the frame. You can check this with a ruler or scale. The lower wheel can be moved in or out by inserting the 5/64” long arm Allen wrench through the hole in the lower left side of the saw’s frame and loosening the set screw on the brass arbor. Move the wheel to the correct position, check with the ruler or scale, and secure the set screw.

## Blade Tension

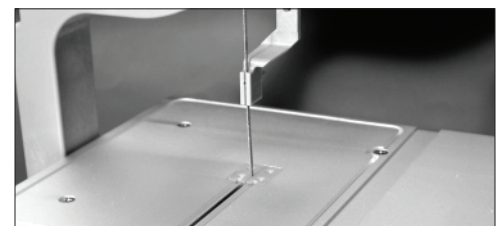
Proper blade tension is important for cutting ease and obtaining maximum blade life. The tension springs lessen the stress that twists and pulls put on the blade to maximize blade life. All Inland saws have tension springs preset for a blade 37.7" in circumference (+ or - .005") - the exact dimension of Inland brand blades. If you use an Inland blade you should never have problems with tension. Some competitors make blades that are only 37.2" and so will have too much tension on them which could shorten blade life. *We highly recommend the use of Inland brand blades for all Inland brand saws.* We are the only saw manufacturer that manufactures its own diamond products making our diamond blades significantly less expensive and designed to give you the best performance.



## Installing the Work Table and BladeSert™

Place the molded table on the table supports with the split facing the front of the saw. Use a Phillips screw driver to attach the table using the four (4) 10-24 1/2" phillips screws. Take care not to overtighten.

Place the BladeSert into the work surface making sure the slot faces the saw front and the bladed blade passes through the slot. Our patented BladeSert eliminates the need for upper blade guides by providing blade support where it is most crucial: at the point of sawing.



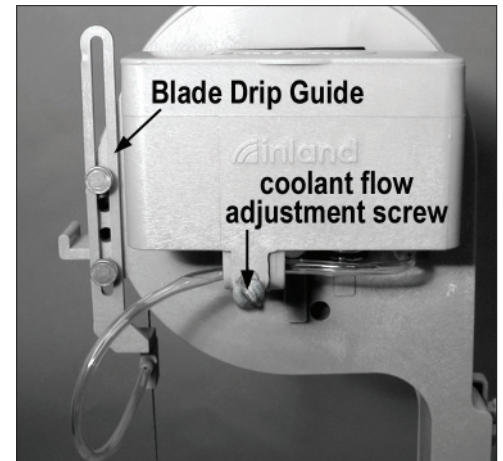
**IMPORTANT NOTE:** The BladeSert will wear with saw use. The slot that the blade passes through will widen over time. Using a worn BladeSert allows for excess play in the blade and the blade becomes more likely to break. How fast this happens will

depend on use and your sawing style. You should check the BladeSert for wear each time you use the saw. You can use the “X” behind the slot as a wear guide; when the slot has worn out beyond the reach of the legs of the “X” (enhanced detail) replace it. It is also a good practice to use a new BladeSert whenever you install a new blade.

## Installing the Coolant Reservoir and Blade Drip Guide

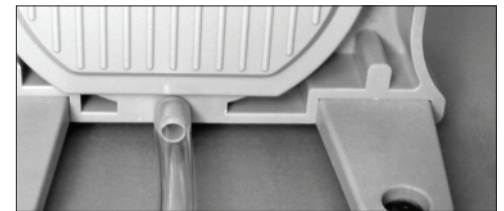
The Coolant Reservoir and Blade Drip Guide **must be installed when using a diamond saw blade** to supply coolant to the blade. Using coolant with a diamond blade is imperative to maintaining the cutting ability and life of the blade.

1. Attach one end of the small diameter DB-100 Coolant Tubing to the stem on the underside of the Coolant Reservoir. **NOTE:** *Soaking the tubing in warm water makes it easier to insert onto the stem.*
2. Feed the other end through the tunnel that runs through the middle of the coolant flow adjustment nest on the reservoir underside and pull most of the tubing through.
3. Screw the 10-24 x 1/2" Metal Thumb Screw, which is the coolant flow adjustment, into the brass threading on the front. Turn until it just holds in place.
4. Install the Coolant Reservoir by sliding it onto the supports located on the back of the saw, just above the tension unit. Put the Coolant Reservoir Cover in place.
5. Install the Blade Drip Guide by placing it against the upper back of the frame with the blade passing through the vertical slot in the holder front. Secure in place using the two (2) brass 10-24 x 3/4" thumb screws. The guide is adjusted by loosening the screws and sliding the guide up or down as needed.
6. Attach the other end of the small diameter DB-100 Coolant Tubing to the stem on the back of the Blade Drip Guide **NOTE:** *Soaking the tubing in warm water makes it easier to insert onto the stem.*



## Installing DB-100 Drain Hose

When using a diamond blade, the large diameter DB-100 Drain Hose must be installed. Straighten the hose before using by soaking it in warm water a few minutes and then pull to remove any kinks. Slide the Drain Hose onto the large stem located at the bottom front of the saw. Put the opposite end of the hose into a collection container placed below the saw. Position the saw to the front edge of your work bench with the Drain Hose laying flat and extending straight out and then down off the work bench into the collection container **NOTE:** *Periodically remove the hose and flush out any cutting residue to keep it working correctly.*

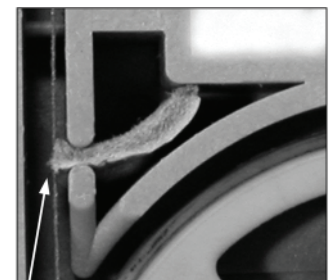
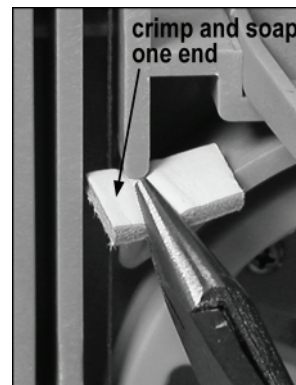


## Optional Leather Wiper

The leather wiper functions to help reduce the amount of over spray that might be carried from the blade to the upper wheel chamber. We recommend installing the wiper running a diamond blade. If you are using a WoodCut™ or MetalCut™ blade the wiper is not needed and you may omit this step.

### Installing the Wiper:

1. Use a pair of pliers to compress one end of the leather wiper, clamping down hard.
2. Apply a small amount of common bar soap to the crimped end.
3. Use your pliers to push the crimped end into the slot so that the edge of the leather just brushes against the blade. Make sure the wiper does not push the blade out of its normal path.



## Using the Diamond Blade

If you have purchased a saw with a diamond blade or are installing a diamond blade for use on your saw, please follow the instructions outlined below for its proper use. Your saw must be converted for wet sawing before use.

1. Before sawing with a diamond blade, check to make sure the Coolant Reservoir, Blade Drip Guide, and Drain Hose are installed on the saw (see the Installing Coolant Reservoir section).
2. Make sure that the coolant flow adjustment screw on the back of the reservoir is closed shut and then fill the reservoir with water. You can fill the reservoir with plain water or add a capfull of Inland Diamond Coolant (Inland no. 50011).
3. Plug the saw into a grounded electrical outlet.
4. Make sure you have proper eye protection on before operating the saw.
5. Adjust the flow of coolant onto the blade by slowly turning the coolant flow adjustment screw. Coolant flow rate should be about one drop of coolant every 4-5 seconds. Water should not flow excessively. Increase the water flow rate **ONLY** if a dry powder forms on the tip of the material being sawed.
6. Turn on the saw. The black control knob is located on the left side of the saw. Please note the saw has a variable speed motor. You need to turn the knob slowly until you reach your desired sawing speed. It is not necessary to run your saw at full speed does not increase its cutting ability.
7. With the saw now running, place a scrap piece of material flat on the work table in front of the blade. Using light pressure, guide the material into the blade. It is important not to force or push material into the diamond blade. Once you have the right "feel", the blade will seem like it is pulling material into it. Pushing into the blade will not increase cutting speed and is more likely to bog it down. Use the speed control to adjust the sawing speed to the material being cut and intricacy involved. The tighter the cut, the slower the speed needed to maintain control and not twist the blade.
8. Your blade will last longer if you do not let the motor run idly. The continuous bending and unbending that the metal experiences as it moves over the wheels causes the blade to work harden and become brittle over time. A properly used blade will often fail from this work hardening before the diamonds wear out. To maximize the value of your blade, make sure you are using the diamonds every time you make that metal bend and unbend.
9. Frequently check the reservoir level while sawing and fill as needed. Shut off the coolant flow after use.

## Using the WoodCut™ or MetalCut™ Blade

If you have purchased a saw with a WoodCut blade or are installing a WoodCut or MetalCut blade onto your saw, follow the instructions outlined here for proper use.

1. If your saw was set up for wet sawing using a diamond blade, make sure the flow adjustment screw that controls the water drip rate is completely turned off. Drain the Coolant Reservoir. Remove the Drain Hose and then dry out the interior of the saw.
2. Install the blade with the teeth pointing downward. Refer to the Installing the Blade section.
3. Plug the saw into a grounded outlet.
4. Make sure you have proper eye protection on before operating the saw.
5. Turn the saw on. The black control knob is on the left of the saw. Please note that the saw has a variable speed motor. When turning the saw on, turn the speed up slowly to your desired sawing speed. It is not necessary to run the saw at full speed to cut. In fact, running the saw at full speed on a continual basis will cause extra stress on the blade and does not increase its cutting ability.
6. With the saw now running, place a scrap piece of material flat on the work table in front of the blade. Using light pressure at first, slowly guide the material into the blade. It is important not to force material into the blade. Allow the blade to do the work. As you get the right "feel", the blade will seem to pull the material into it.
7. Pushing too hard will not increase cutting speed. It will actually slow it down. Use the speed control to adjust sawing speed to the material being cut and intricacy involved. For tight inside curves and intricate work, operate at a slower speed to maintain control and not twist the blade.
8. If the blade seems limp, loose or slips on the wheels as you saw, adjust the blade tension or tracking as outlined on page 3 and check the BladeSert for wear, replace as needed.

## Sawing Tips For All Blades

Sawing effectively is an acquired skill. Just remember to let the blade do the work. Be aware that sawing with a diamond blade is quite different than sawing with toothed blades. The diamond in the blade is actually wearing away the material being

cut rather than ripping fibers like a wood blade.

1. Wear safety eye protection while operating your saw.
2. Never leave the saw running when not in use to prolong blade life and turn off and unplug your saw when not in use.
3. Guide the material straight into the blade. Never push or force the cutting action.
4. Use lighter pressure and slower speeds when starting a cut and then increase speed to the desired cutting level. Slower speeds and lighter pressure are recommended for intricate cuts, tight curves, when completing a cut or when backing out of a cut.
5. Never twist or bend the blade.
6. If a dry powder appears on the cutting surface or in the air when wet sawing with the diamond blade, more coolant (water) is needed. Check the reservoir level first. If there is plenty of coolant, increase the drip rate by slowly turning the coolant adjustment screw on reservoir.
7. If excess coolant (water) is spraying off the blade or coolant puddles on the work surface when wet sawing, check the drip rate. You may also want to install the leather wiper to help control excess water on the blade. (See installing the Leather Wiper section)
8. You can use the WoodCut or MetalCut blade “wet” when sawing plastics and fiberglass to reduce heat and melting.
9. Keep out of the reach of children.

## Maintenance

Maintenance to your saw is minimal but important to prolonging the life and performance of the machine.

1. **Saw Frame:** The main components of your saw are virtually maintenance free. Periodically clean the interior of your saw. Either rinse clean with water or wood and metal cutting residues can be vacuumed out.
2. **The Motor:** The unit is sealed and requires no internal maintenance. Make sure to keep the entire unit clean and dry.
3. **Upper Drive Wheel:** The upper drive wheel needle bearing should be oiled about every 10 hours of running time. Do this by first emptying the coolant reservoir if need be. Tilt the saw backward at a 45° angle. Place 4 to 6 drops of general purpose oil (not WD-40™) into the bearing area.
4. **BladeSert Blade Guide:** The BladeSert will wear with saw use. The slot that the blade passes through will widen over time. Check the BladeSert for wear each time you use the saw and immediately replace when it begins to show signs of widening and wear. You can use the "X" behind the slot as a wear guide. Refer to the Installing the Work Table and BladeSert section.
5. **Leather Wiper:** The wiper does wear as the blade brushes against it. As the end wears, move the wiper back up against the blade, referring to Installing the Leather Wiper section.
6. **Work Table:** Periodically wipe down or rinse the table to remove accumulated cutting residue.
7. **Large Drain Hose:** Periodically remove the hose and rinse it to remove cutting residue and keep it free flowing.

## Replacement Parts

Part Name	Inland no.	Part Name	Inland no.	Part Name	Inland no.
DiamondCut Blade™	90007	BladeSert™	90022	Tension Block	65809116
WoodCut™ Blade	90001	Molded Work Table	90033	Upper Wheel w/ Bearing	65809001
MetalCut™ Blade	90003	Leather Wiper	90014	Upper Wheel Arbor	65809002
		Blade Drip Guide	90016	Motor Unit - 115V	65839110
				Speed Controller -115V	95846020

## Service

For questions or comments regarding the use of this or any Inland product, visit our website at [www.inlandcraft.com](http://www.inlandcraft.com); email us at [helpdesk@inlandcraft.com](mailto:helpdesk@inlandcraft.com); call Inland Customer Service at 1-800-521-8428 from 9 AM to 5 PM ET or write:



Inland Craft Products  
32052 Edward Drive  
Madison Heights MI 48071